

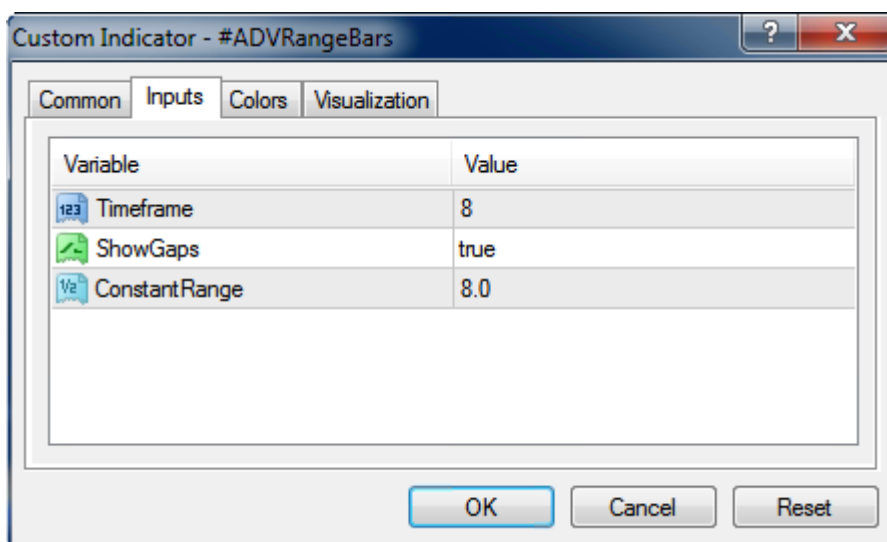
How to use the #ADVRangeBars Indicator:

Step 1 (install)

- shutdown your MT4 software
- copy the indicator file into your <MT4>/experts/indicators/ folder
- there is one indicator file:
 - #ADVRangeBars.ex4
- restart MT4 software

Step 2 (setup the feeder chart)

- First switch to the 1minute timeframe and press Page Up for a few seconds to make sure you have 1minute chart history. Once you have done this you can switch to any other timeframe you like.
 - If you get an error from the range bars indicator about not enough 1 min history come back to this step and redo it.
- Add the custom indicator #ADVRangeBars to the chart symbol you want to generate a range bar chart for.
- When you add the indicator to the chart you will see the indicator settings

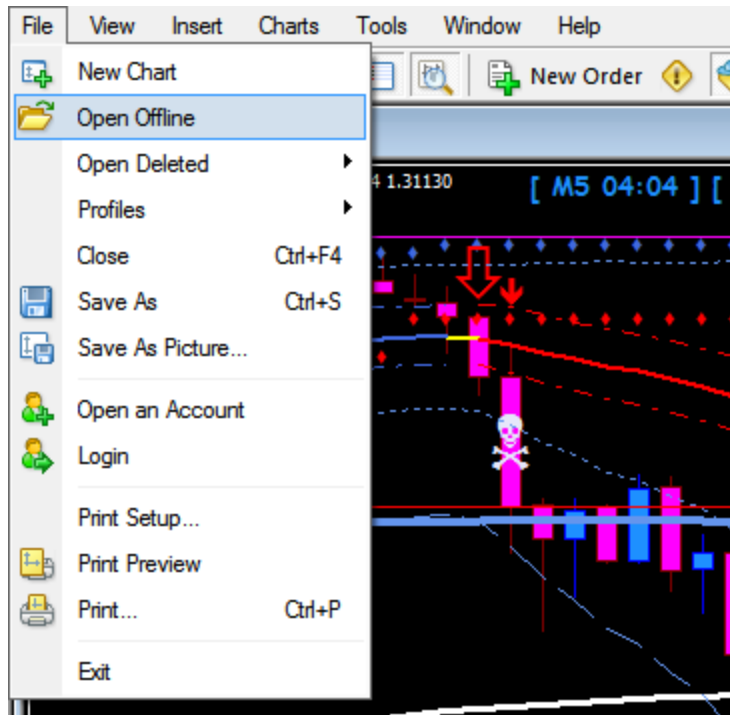


- the valid settings you can use are:

- Timeframe
 - enter any non standard timeframe here, in minutes, like 2, 3, 8, 11, 13 etc, this will determine what the timeframe of the offline chart is but it is nothing more than a placeholder value since this chart will be using range bars.
 - All charts have to have a timeframe though so even though range bar charts do not use times, you must choose a value.
 - Choose a unique value if you have multiple range bar charts open.
- ShowGaps
 - set to true if you want to see price gaps between range bars, false otherwise.
- ConstantRange
 - set this to the value you wish to use for your range bars height in pips
 - example : a value of 8 would create range bars 8 pips tall/long.
 - value will be automatically adjusted for 4/5 digit brokers if the pair is a Forex major. So do not multiply by 10 if you use a 5 digit broker and the pair is a Forex major.
 - If the pair is non forex or non forex major you may need to multiply by 10 for pipettes or sub-points in some cases, experiment to see.
- Feeder chart setup is complete now, you MUST keep this chart open with the #ADVRangeBar indicator attached to it, if you close the chart or remove the indicator your range bar chart will stop receiving real time updates.
- Because this is an indicator and not a script, when you restart MT4 your range bar charts will also restart and resume.
- You may have to go to the indicator on the feeder chart and edit it (without changing settings) and press ok to force the range bar chart to regenerate.

Step 3 (open the offline chart)

- now to open the offline chart:
- in MT4 go to the menu : file->open offline



- now select the offline chart from the list with a timeframe that matches what you selected in the feeder chart indicator and with the symbol that is the same as the feeder chart (example : EURUSD,m8 etc)
- for example if you input 8 on EURUSD, select the EURUSD,M8 chart from the list
- select that chart in the list and click the Open button
- the range bar chart will now appear and you may add indicators to it or apply templates to it



- if you did everything correctly you should see this chart updating in real time.
- you may apply indicators or templates to this chart to customize it, just remember you must keep the feeder chart with indicator open also.
- when you restart your MT4 platform, you may need to edit the feeder chart indicator and click OK (don't change anything) to force the offline chart to re-draw any missing bars between the restarts. (the bars are in the file, but sometimes you have to do this to force MT4 to redraw the chart).